

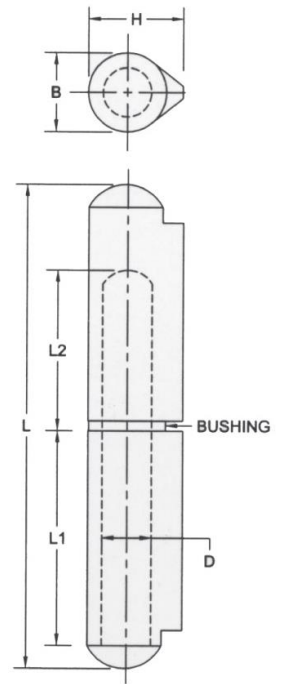
# WELD-ON HINGES - FIXED BORE



FIXED PIN



FIXED PIN WITH GREASE FITTING



## STEEL BODY. BRASS PIN AND BUSHING

MODEL #	STOCK	LENGTH	THICKNESS	DIAMETER			PIN
		L	H	B	L1	L2	DIA
FBP-080	H2E20	3.15	0.61	0.510	1.29	0.85	0.315
FBP-100	H3F78	3.94	0.77	0.630	1.63	1.20	0.394
FBP-150	H7J15	5.91	1.00	0.787	2.54	1.63	0.500

## STEEL BODY, BRASS PIN AND BUSHING, GREASE FITTING

FBP-100 G/F	H3G66	3.94	0.77	0.630	1.63	1.20	0.394
FBP-150 G/F	H7K98	5.91	1.00	0.787	2.54	1.63	0.500
FBP-200 G/F	H14M10	7.87	1.13	0.906	3.44	2.05	0.625

## STAINLESS STEEL BODY, PIN AND BUSHING

FSS-050	H2N37	1.97	0.38	0.315	0.79	0.58	0.197
FSS-080	H4P85	3.15	0.61	0.510	1.29	0.85	0.315
FSS-100	H8Q18	3.94	0.77	0.630	1.63	1.20	0.394

## ALUMINUM BODY, STAINLESS STEEL PIN AND BUSHING

AFSSP-080	H2A73	3.15	0.61	0.510	1.29	0.85	0.315
AFSSP-100	H3B93	3.94	0.77	0.630	1.63	1.20	0.394
AFSSP-150	12C06	5.91	1.00	0.787	2.54	1.63	0.500
AFSSP-200	20D60	7.87	1.13	0.906	3.44	2.05	0.625

# CONTINUOUS HINGES

<u>PRODUCT NUMBER</u>	<u>STOCK</u>	<u>OPEN WIDTH</u>	<u>PIN DIA</u>	<u>METAL GAUGE</u>	<u>TYPE</u>	<u>LENGTH</u>
<b>LIGHTWEIGHT</b>						
H9111 - S040020	C3S66	1 1/4"	3/32"	19 GA	PLAIN	72"
H9112 - S040024	C5T22	1 1/2"	3/32"	19GA	PLAIN	72"
H8271 - S065024	C6E33	1 1/2"	3/16"	16 GA	PLAIN	72"
H9113 - S064032	C11U04	2"	3/16"	16 GA	PLAIN	72"
H8270 - S040032	C8F46	2"	3/32"	19 GA	PLAIN	72"
H9114 - S064040	C15W18	2 1/2"	3/16"	16 GA	PLAIN	72"
H8272 - S065048	C11G84	3"	3/16"	16 GA	PLAIN	72"
<b>STANDARD WEIGHT</b>						
H9115 - S076032	C11X04	2"	1/4"	14 GA	PLAIN	72"
H9117 - S076048	C31Y25	2 1/2"	1/4"	14 GA	PLAIN	72"
H9118 - S076048	C13Z12	3"	1/4"	14 GA	PLAIN	72"
H9120 - S076056	C14A85	3 1/2"	1/4"	14 GA	PLAIN	72"
<b>HEAVY WEIGHT</b>						
H9121 - S093032	C18B07	2"	1/4"	13 GA	PLAIN	72"
H9122	C17C92	2 1/2"	1/4"	13 GA	PLAIN	72"
H9123 - S093048	C22D26	3"	1/4"	13 GA	PLAIN	72"
<b>EXTRA HEAVY WEIGHT</b>						
H9125 - S120032	C30E05	2"	3/8"	11 GA	PLAIN	72"
H9127 - S120048	C33F28	3"	3/8"	11 GA	PLAIN	72"
H9128 - S120048	C55G28	3"	3/8"	11 GA	PLAIN	96"
H9150 - S120080	C73Z28	5"	3/8"	11 GA	PLAIN	96"
<b>ALUMINUM</b>						
H8274 - A040020	C5H61	1 1/4"	3/32"	19 GA	PLAIN	72"
H9130 - A040024	C7H23	1 1/2"	3/32"	19 GA	PLAIN	72"
H9131 - A062032	C9I64	2"	1/8"	16 GA	PLAIN	72"
A12203272	C30B62	2"	1/4"	11 GA	PLAIN	72"
H8275 - A062048	C17W80	3"	1/8"	16 GA	PLAIN	72"
A12204872	C44C14	3"	1/4"	11 GA	PLAIN	72"
A12004872	C65A52	3"	3/8"	11 GA	PLAIN	72"
A06206472	C23D61	4"	1/8"	.060 GA	PLAIN	72"
<b>STAINLESS</b>						
H9132 - SS040024	C12J95	1 1/2"	3/32"	19 GA	PLAIN	72"
H8278 - SS062024	C15K58	1 1/2"	1/8"	16 GA	PLAIN	72"
H8277 - SS040032	C13J60	2"	3/32"	19 GA	PLAIN	72"
H9133 - SS062032	C22L22	2"	1/8"	16 GA	PLAIN	72"
H8281 - SS065040	C33N36	1 1/2"	3/16"	16 GA	PLAIN	72"
H8282 - SS076032	C34O42	2"	1/4"	14 GA	PLAIN	72"
H8283 - SS076040	C47P49	2 1/2"	1/4"	14 GA	PLAIN	72"
H8279 - SS062048	C27L34	3"	1/8"	16 GA	PLAIN	72"
H9134 - SS065048	C49K34	3"	3/16"	16 GA	PLAIN	72"
H8284 - SS093048	C64Q23	3"	1/4"	14 GA	PLAIN	72"
SS12004872	C80Y45	3"	3/8"	11 GA	PLAIN	72"

